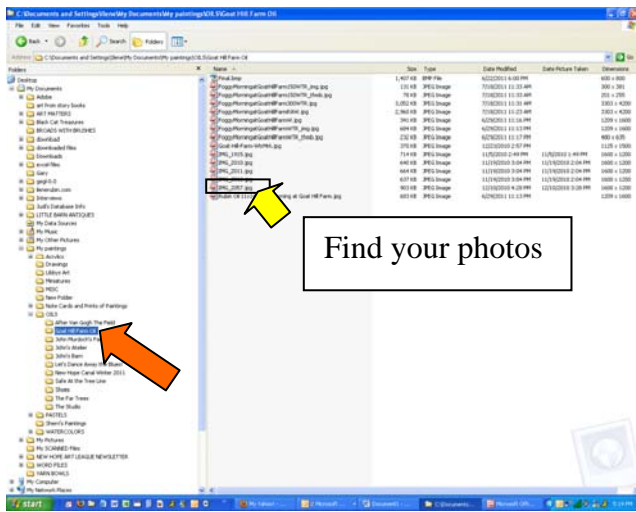
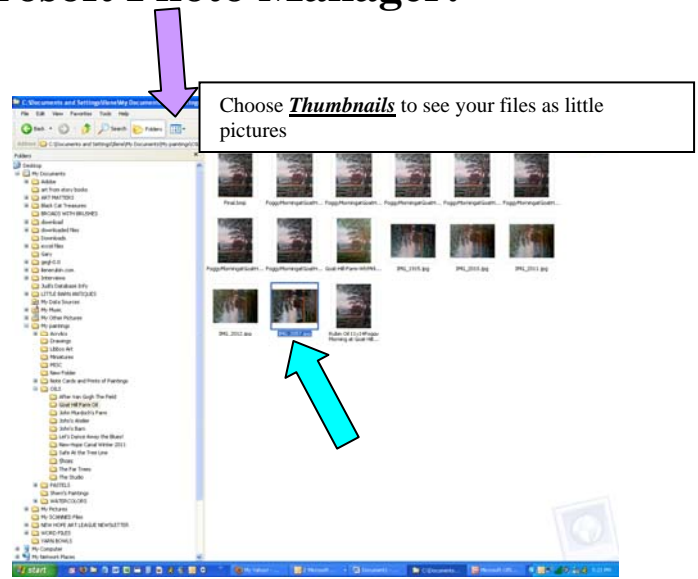


Editing Photos In Microsoft Photo Manager:



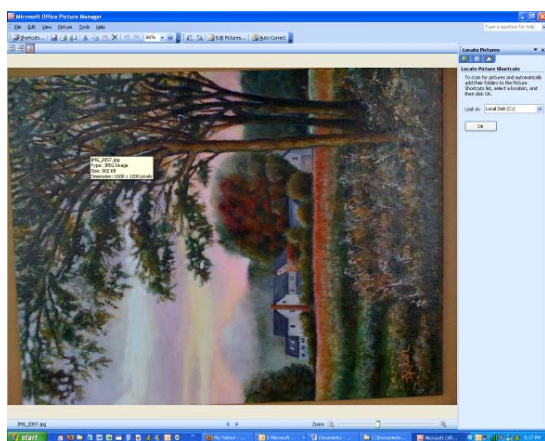
Find your photos

1) Open up your File Explore Area



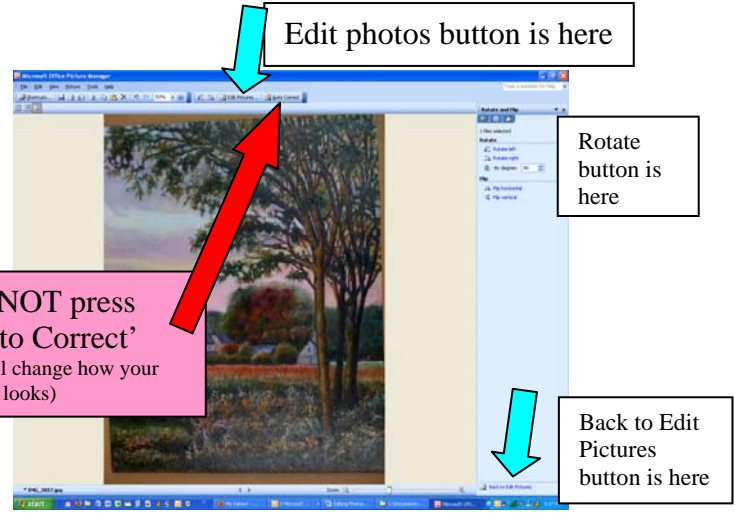
Choose Thumbnails to see your files as little pictures

2) Choose a file to open



Do NOT press 'Auto Correct' (it will change how your photo looks)

3) Open The Photo

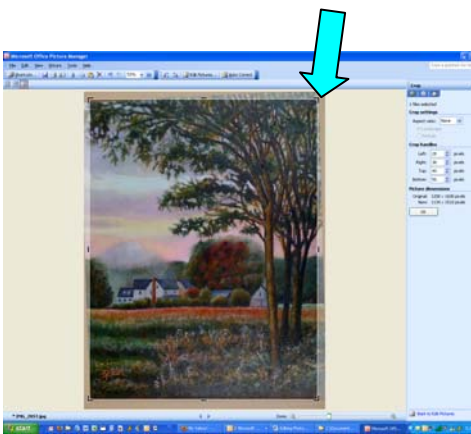


Edit photos button is here

Rotate button is here

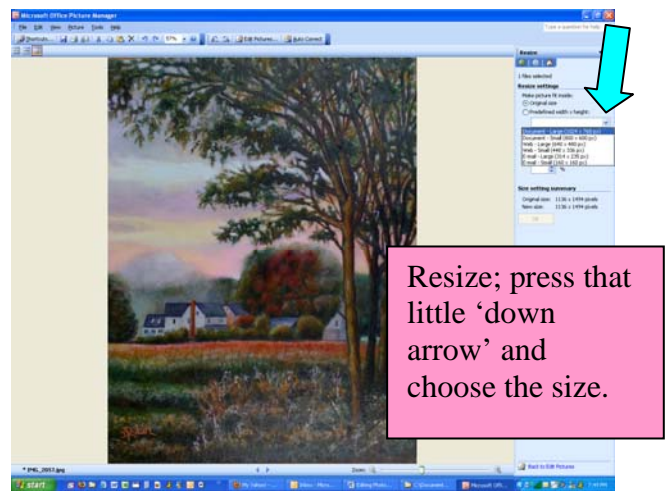
Back to Edit Pictures button is here

4) Press 'Edit Pictures' Choose ROTATE, Rotate RIGHT, Press 'Back to Editing Pictures'



You can straighten a crooked photo by cropping the edges, or you can remove the frame or background by cropping the sides of the photo. Press the corner frame and hold the mouse button in, drag it to where you want to crop to, and then let go. You can always UNDO.

5) CROP PHOTO- Remove Frame Area or Background Areas Press 'OK' and then 'Back to Editing Pictures'



Resize; press that little 'down arrow' and choose the size.

6) Press 'Resize'. Choose 1024 x 768. Press 'OK'

Press 'FILE' and then 'SAVE AS' and type **YourName1TitleofPainting.jpg**